

The product using material and processing must conform to the "WL-PZ-001" HSF technical standard control requirements

RoHS+HF

NOTE:

1.MATERIAL SPECIFICATION:

- 1-1.HOUSING: LCP6808,UL94V-0,NATURE
- 1-2.CAP: LCP301,UL94V-0,BLACK
- 1-2.CONTACTS: PHOSPHOR BRONZE
- 1-2.SOLDER TABS: PHOSPHOR BRONZE

2.PLATING SPECIFICATION:

- 2-1.CONTACTS: 50~100u" Nickel under plating over all. Gold flash on contact and solder area.
- 2-2.SOLDER TABS: 50~100u" Nickel under plating over all 80~150u" Matte Tin over all

3.MECHANICAL PERFORMANCE:

- 3-1.RETENTIVITY FORCE: 0.03kgf/PIN MIN
- 3-2.DURABILITY: 20 CYCLES.

3.ELECTRICAL PERFORMANCE:

- 3-1.CURRENT RATING: 0.5A
- RATED VOLTAGE : 50V AC/DC
- 3-2.CONTACT RESISTANCE: 40 mΩ MAX
- 3-3.INSULATION RESISTANCE: 500MΩ Min
- 3-4.DIELECTRIC WITHSTANDING : 250V

4.ENVIRONMENTAL PERFORMANCE:

- 4-1.OPERATING TEMPERATURE: -25°C~+85°C.

5.PACKAGE SPEC: REEL

6.P/N: F1007 15 F 9-1 XX 2 X X 01

SERIES NO:

HEIGHT:
15: 1.5mm

MALE FEMALE:
F-FEMALE

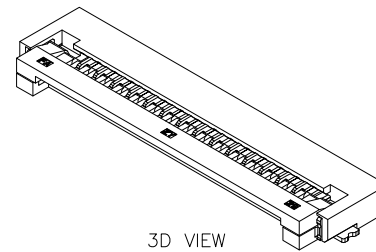
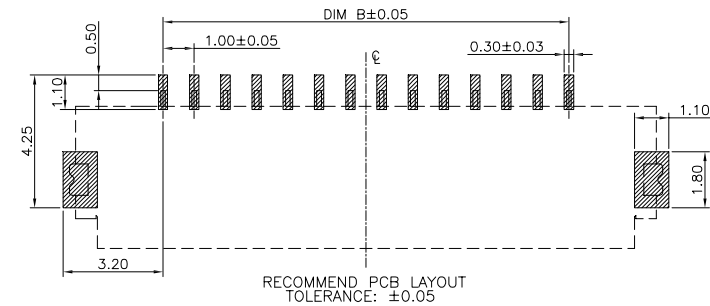
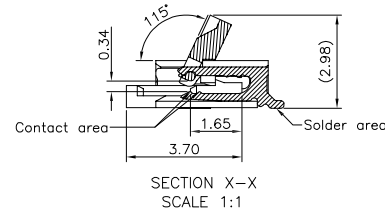
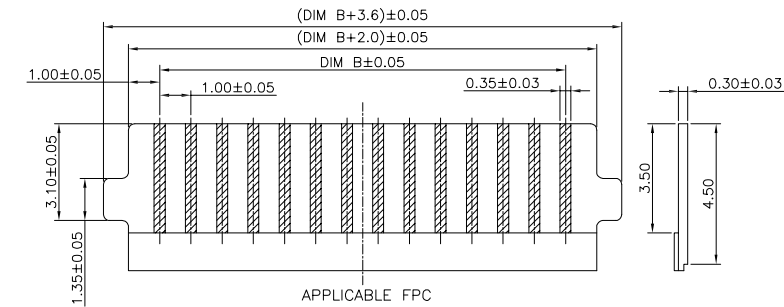
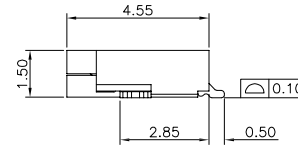
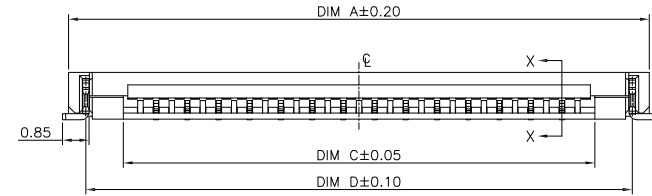
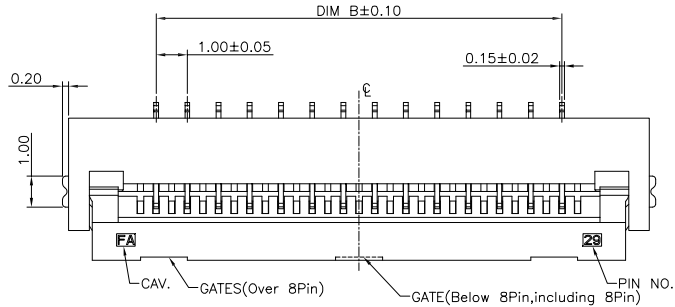
ANGLE:
9-90°

ROW NO:
1-SINGLE ROW

COLOR:
M-BEIGE
K-WHITE
S-NATURE

PLATING:
1-G/F
A-ALL AU G/F
D-MATTE Tin

TERMPOINT:
2-SMT
PIN Q'PY:
04~28



Circuit	Dimensions(mm)				Circuit	Dimensions(mm)			
	A	B	C	D		A	B	C	D
04	8.60	3.00	5.10	7.50	17	21.60	16.00	18.10	20.50
05	9.60	4.00	6.10	8.50	18	22.60	17.00	19.10	21.50
06	10.60	5.00	7.10	9.50	19	23.60	18.00	20.10	22.50
07	11.60	6.00	8.10	10.50	20	24.60	19.00	21.10	23.50
08	12.60	7.00	9.10	11.50	21	25.60	20.00	22.10	24.50
09	13.60	8.00	10.10	12.50	22	26.60	21.00	23.10	25.50
10	14.60	9.00	11.10	13.50	23	27.60	22.00	24.10	26.50
11	15.60	10.00	12.10	14.50	24	28.60	23.00	25.10	27.50
12	16.60	11.00	13.10	15.50	25	29.60	24.00	26.10	28.50
13	17.60	12.00	14.10	16.50	26	30.60	25.00	27.10	29.50
14	18.60	13.00	15.10	17.50	27	31.60	26.00	28.10	30.50
15	19.60	14.00	16.10	18.50	28	32.60	27.00	29.10	31.50
16	20.60	15.00	17.10	19.50					

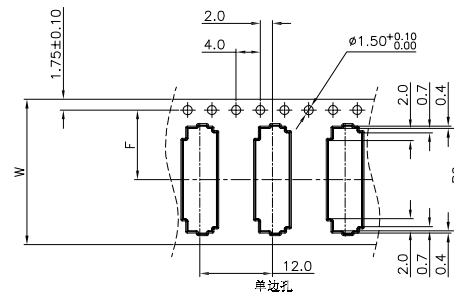
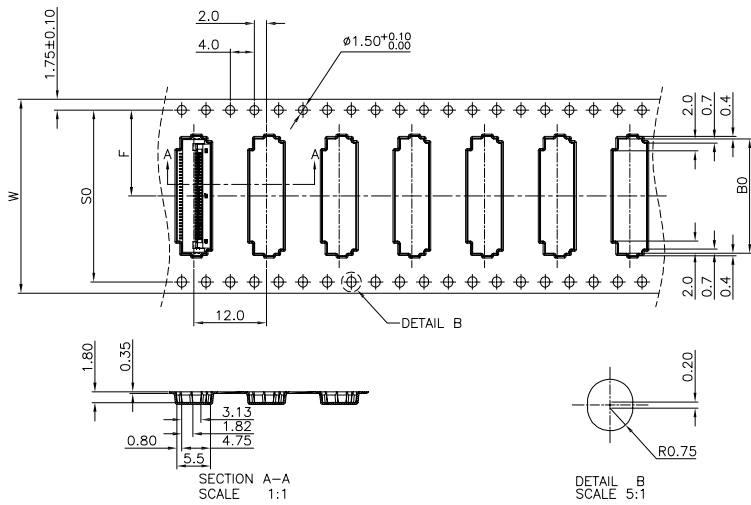
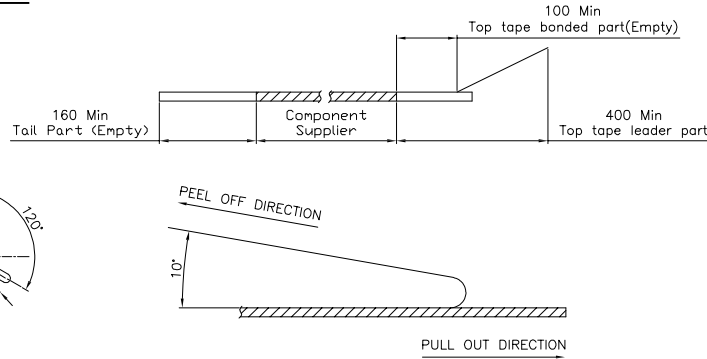
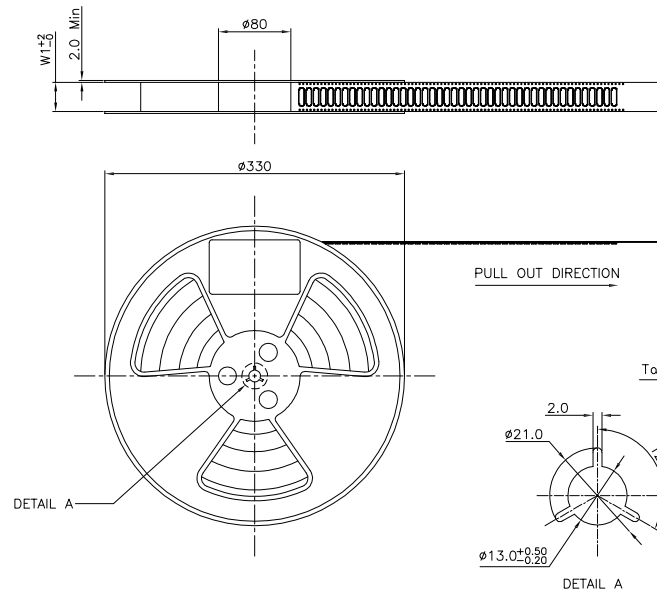
REV.	REVISION RECORD	DATE	UNIT:mm	GENERAL TOLERANCES		SCALE: 1:1	NAME	DATE	PART.NO:	DWG.NO:	WanLian Technology Co., Ltd
AO	NEW RELEASE	22.10.28		LINEAR	ANGLES						
			0.00±0.25	X'±3°	APPROVED	Wang_jr	22.10.28	F100715F9-1XX2XX01	ENDE05		
			0.00±0.10	X'X' ±2°	DESIGNER	Han_Gao	22.10.28	TITLE:			
			SIZE: A4		DRAWN	LanXuan_Hou	22.10.28	Pitch 1.00mm H1.5mm卧贴前掀盖下接触 FPC		REV: A0	SHEET: 1/2



The product using material and processing must conform to the "WL-PZ-001" HSF technical standard control requirements

RoHS+HF

- NOTES:
1. 10 SPROCKET HOLE PITCH CUMULATIVE TOLERANCE.±0.20mm
 2. CARRIER CAMBER NOT TO EXCEED 1mm IN 250mm.
 3. ALL DIMENSIONS MEET EIA-481-C REQUIREMENTS.
 4. MATERIAL: BLACK ANTI-STATIC POLYSTYRENE.
 5. THICKNESS: 0.35 ± 0.05 mm.
 6. PACKING LENGTH PER 13" REEL: 24.60METERS.
 7. COMPONENT LOAD PER 13" REEL: 2000PCS
 8. PEELING OFF FORCE OF TOP TAPE 0.1N~0.7N(10.2gf~71.4gf).



CKTS FOR 1.0 PITCH	CKTS FOR 0.5 PITCH	B0±0.10	W	W1	F	S0±0.10
4	4	6.40	16±0.30	16.4	7.5±0.10	单边孔
5	5	6.90				
6	6	7.40				
7	7	7.90				
8	8	8.40				
9	9	8.90				
10	10	9.40				
11	11	9.90				
12	12	10.40	24±0.30	24.4	11.5	单边孔
13	13	10.90				
14	14	11.40				
15	15	11.90				
16	16	12.40				
17	17	12.90				
18	18	13.40				
19	19	13.90				
20	20	14.40	32±0.30	32.4	14.2±0.10	28.4
21	21	14.90				
22	22	15.40				
23	23	15.90				
24	24	16.40				
25	25	16.90				
26	26	17.40				
27	27	17.90				
28	28	18.40	44±0.30	44.4	20.2±0.15	40.4
29	29	18.90				
30	30	19.40				
31	31	19.90				
32	32	20.40				
33	33	20.90				
34	34	21.40				
35	35	21.90				
36	36	22.40	48±0.30	48.4	22.2±0.15	42.4
37	37	22.90				
38	38	23.40				
39	39	23.90				
40	40	24.40				
41	41	24.90				
42	42	25.40				
43	43	25.90				
44	44	26.40	56±0.30	56.4	24.2±0.15	44.4
45	45	26.90				
46	46	27.40				
47	47	27.90				
48	48	28.40				
49	49	28.90				
50	50	29.40				
51	51	29.90				
52	52	30.40	64±0.30	64.4	26.2±0.15	46.4
53	53	30.90				
54	54	31.40				
55	55	31.90				
56	56	32.40				
57	57	32.90				

REV.	REVISION RECORD	DATE	GENERAL TOLERANCES		SCALE:	NAME	DATE	PART.NO:	DWG.NO:	 WanLian Technology Co., Ltd	
AO	NEW RELEASE	22.10.28	LINEAR	ANGLES	1:1	Wang_jr	22.10.28	F100715F9-1XX2XX01	ENDE05		
			0.0±0.35	X°REF±6'	DESIGNER	Han_Gao	22.10.28	TITLE:		REV: A0	SHEET: 2/2
			0.00±0.25	X'±3'	DRAWN	LanXuan_Hou	22.10.28	Pitch 1.00mm H1.5mm卧贴前掀盖下接触 FPC			
			0.000±0.10	X'X' ±2'							